

1 Bolander Grove

Lillie Square, SW6 1EQ

Offers Around £750,000



1



1

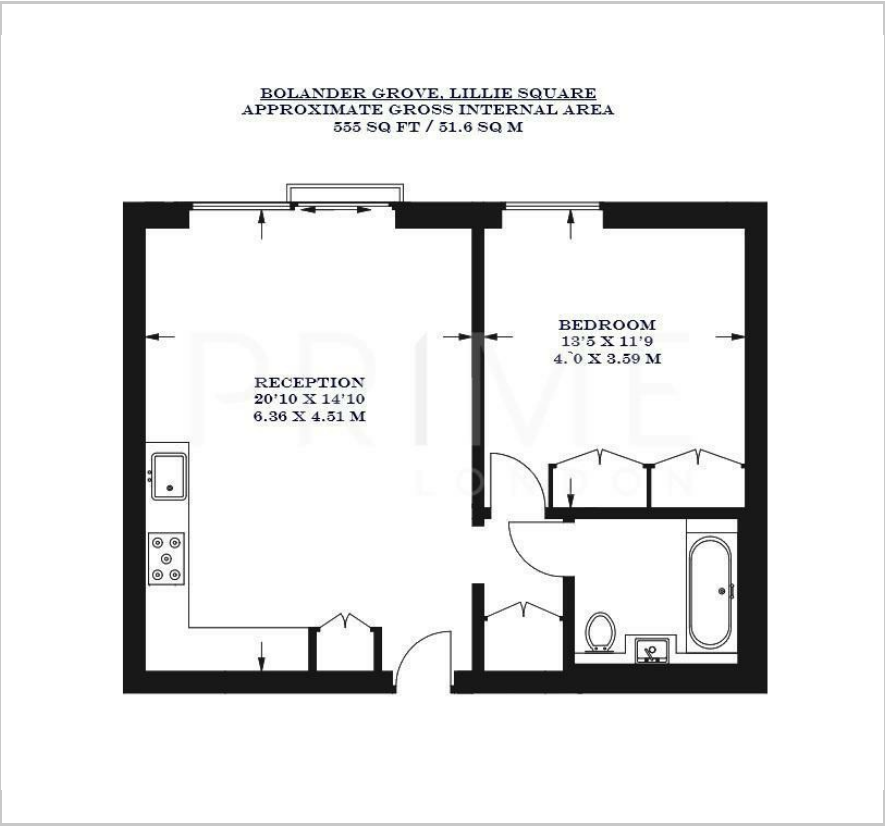


1



B

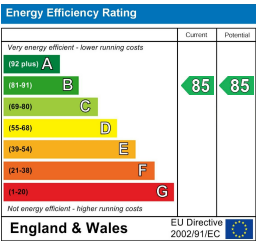
Floor Plan



Area Map



Energy Efficiency Graph



Viewing

By appointment. Contact us on 0207 052 1075 if you wish to arrange a viewing appointment for this property, or require further information.

- One bedroom apartment
- 555 sq ft (51.6 sqm)
- Ample storage throughout
- Residents' gym, pool, and spa
- A stone's throw away from West Brompton station
- 24 hour concierge



This elegant one bedroom apartment, situated within the sought after Lillie Square development, is available for sale through Prime London.

Extending to approximately 555 sq ft (51.6 sqm), the property offers a bright reception and dining area, framed by sliding doors that open onto a charming Juliet balcony, with wide reaching views. The living space connects to a stylish, fully fitted kitchen, complete with premium appliances and high quality finishes throughout. The double bedroom features excellent built in storage, while a separate modern bathroom.

Residents of Lillie Square benefit from an exceptional range of amenities, including a 24 hour concierge and security, as well as exclusive access to the development's private clubhouse featuring a gym, swimming pool, spa, and residents' lounge.

Beautifully integrated into the surrounding neighbourhood, Lillie Square is ideally located moments from West Brompton Station, and within easy reach of Earls Court, South Kensington, Chelsea, and Fulham.



These particulars, whilst believed to be accurate are set out as a general outline only for guidance and do not constitute any part of an offer or contract. Intending purchasers should not rely on them as statements of representation of fact, but must satisfy themselves by inspection or otherwise as to their accuracy. No person in this firms employment has the authority to make or give any representation or warranty in respect of the property.